



Auto-ISAC Overview

June 4, 2021

Faye Francy
Executive Director

This document is Auto-ISAC Sensitive and Confidential.



Connectivity creates the potential for fleet-wide attacks affecting

Safety

- Remote control or manipulation
- Spoofing vehicle sensors
- Disruption of vehicle network

Quality

- Disruption or interference of services
- Manipulation of performance and diagnostics

Privacy

- PII breach
- Payment information leak
- Tracking / eavesdropping

The business impact of a cyber attack is real

- **Endangerment** of customers
- Damage to **brand** and reputation
- Undermining trust in connectivity and autonomy
- Exposure to **costly litigation**
- Costly remediation needed to address issues and liabilities
- Disruption to your business

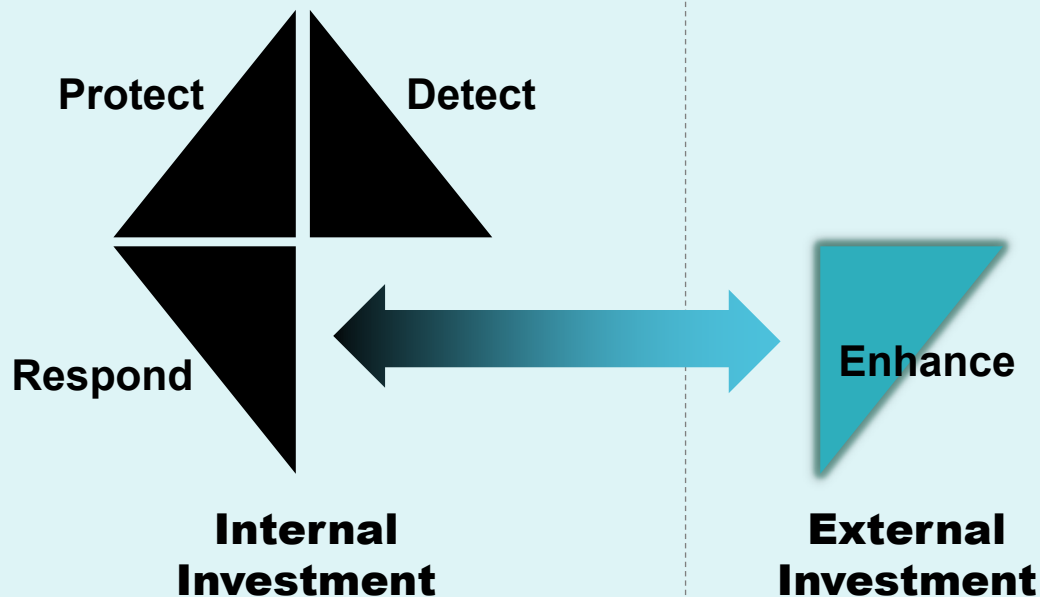
CYBERSECURITY IS A BUSINESS RISK

WHY AN ISAC?

INFORMATION SHARING AND ANALYSIS CENTER (ISAC)

Background

Organizations must act individually to manage cyber risk...



...one company's detection is another company's prevention

- Identify **emerging threats** and **vulnerabilities** earlier
- **Pool limited resources** to better fight your adaptive adversary
- **Share incident intelligence** to act more quickly
- Proactively shape industry-wide **best practices**
- Protect overall **trust** in innovation across the industry
- Build **resiliency** across industry

Auto ISAC – Who We Are

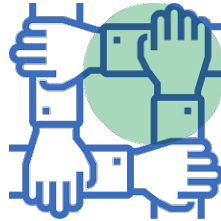
RE-EVALUATION OF STRATEGY & MISSION

Who We Are & Why We Are Here

MISSION: *To strengthen the global automotive industry against cyber threats and enhance cyber attack resilience and response. An attack on one is an attack on all.*



Timely Sharing of
Threat & Vulnerability
Information



Building
Strong
Relationships



Developing
Effective
Response Plans



Ensuring & Maturing
Consistent Cyber
Capability

Each Member is expected to: *Trust, Share, Teach, Learn, Act*

We are a **technical organization**, serving membership by end enabling **cyber learning and capability development**. As members, we are expected to both **share and learn**, and continue to strengthen capabilities to protect our customers.

We will hold ourselves accountable.

2021 BOARD OF DIRECTORS

EXECUTIVE COMMITTEE (ExCom)



Kevin Tierney
Chair of the
Board of the Directors
GM



Josh Davis
Vice Chair of the
Board of the Directors
Toyota



Jenny Gilger
Secretary of the
Board of the Directors
Honda



Tim Geiger
Treasurer of the
Board of the Directors
Ford



Todd Lawless
Chair of the
Advisory Board
Continental

2021 ADVISORY BOARD (AB) LEADERSHIP



Todd Lawless
Chair of the
Advisory Board
Continental



Michael Feiri
Vice Chair of the
Advisory Board
ZF



Chris Lupini
Chair of the SAG
Aptiv



Larry Hilkene
Chair of the CAG
Cummins

MEMBER ROSTER

AS OF MAY 1, 2021

Member Roster

Highlighted = Change

| | | |
|---------------------------|-------------------------|---------------------|
| Aisin | Hyundai | NXP |
| Allison Transmission | Infineon | Oshkosh Corp |
| Aptiv | Intel | PACCAR |
| Argo AI, LLC | John Deere Electronic | Panasonic |
| AT&T | Kia | Polaris |
| Blackberry Limited | Knorr Bremse | Qualcomm |
| BMW Group | Lear | Renesas Electronics |
| Borg Warner (Delphi) | LGE | Subaru |
| Bosch (Escrypt-Affiliate) | Luminar | Sumitomo Electric |
| Continental | Magna | Tokai Rika |
| Cummins | MARELLI | Toyota |
| Denso | Mazda | TuSimple |
| FCA/Stellantis | Mercedes-Benz | Valeo |
| Ford | Meritor | Veoneer |
| Garrett | Mitsubishi Motors | Volkswagen |
| General Motors | Mitsubishi Electric | Volvo Cars |
| Geotab | Mobis | Volvo Group |
| Google | Motional | Waymo |
| Harman | Navistar | Yamaha Motors |
| Hitachi | Nexteer Automotive Corp | ZF |
| Honda | Nissan | 62 Members |

Auto ISAC – Value Streams

RE-EVALUATION OF STRATEGY
& MISSION

*Defined
Value Streams*



INFO SHARING & AWARENESS

avoid or reduce impact of cybersecurity events, growing into automotive relevant IT & OT space



EDUCATION

enable effective industry response & resilience, and demonstrates commitment to stakeholders



RELATIONSHIPS

ensure industry readiness



VALUE STREAMS

GLOBAL SCOPE

GLOBAL TASK FORCE BUILDING SUSTAINABLE OPERATING PLAN FOR EUROPEAN REGION AND SUPPORT TO JAPAN AUTO-ISAC.

DOMAIN SCOPE

AUTOMOTIVE RELEVANT IT & OT INFORMATION IN SCOPE. MEMBERS WORKING TO DETERMINE HOW TO ADD & EXTRACT VALUE FROM THESE DOMAINS.

BPSC -> ETSC

SHIFT FOCUS FROM BEST PRACTICE CREATION TO BEST PRACTICE EDUCATION & TRAINING MATERIAL / EVENTS. ENSURE MEMBERSHIP CAPABILITY IS DEVELOPING BROADLY.

➤ Exercises-Drills / Analytic Products / Assessments

- Executive C-suite Tabletop
- Analyst Drills – Exercise
- Legal Exercise

➤ Quarterly Workshops

- Analyst Working Group
- Webinars – Members / Partners

➤ Committees

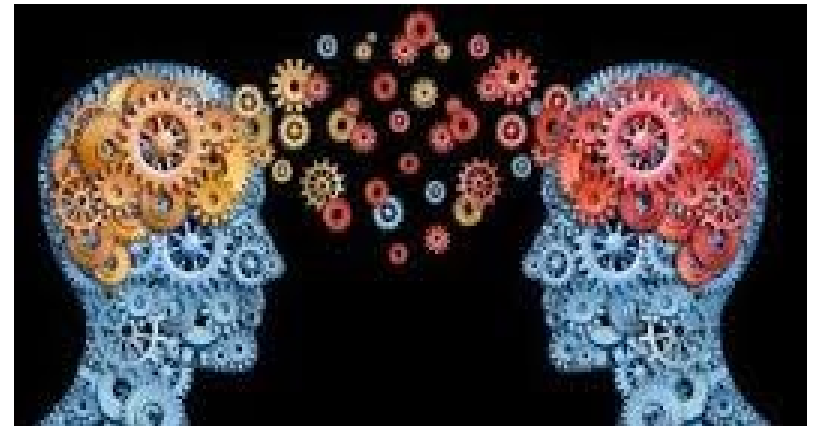
- Advise the Board | Recommendations
- Management-driven
- Members-Teaching-Members

➤ Working Groups

- Summit & Global Task Forces
- Delivering Member value

➤ Summits

- Sharing - Members, Partners / Community



Auto ISAC – Measuring Success

**ROLES, RESPONSIBILITIES
& METRICS**

**Measuring
Success**

VALUE STREAMS & PERFORMANCE INDICATORS

Top Line Goal: Zero safety-related cyber events in the industry



INFO SHARING & AWARENESS

% Participation
Sharing / Platform /
Attendance



EDUCATION

% Taking Educational
Offerings
Maturity Surveys



RELATIONSHIPS

% Member Satisfaction
with value added
relationships

Bottom Line Goal: Maintain healthy finances and engagement

MEMBER BENEFITS

Benefits

WHAT YOU GET

| Services |
|--------------------------------|
| Real-time Intelligence Sharing |
| Validation and Context |
| Crisis Notifications |
| Intelligence Summaries |
| Best Practices |
| Member Contact Directory |
| Exchanges / Workshops |
| Webinars and Presentations |
| Community Calls |
| Tabletop Exercises |
| Annual Summit Event |

WHY IT MATTERS



Find and fix issues faster

Time is money, especially in cyber. Members receive verified, timely cyber threat, vulnerability, and remediation info.



Maintain a trusted brand

Customers demand safety and privacy. OEMs demand secure components from suppliers. Joining the ISAC demonstrates a commitment to protecting vehicles, services and, ultimately, drivers.



Stay ahead of regulation

Uniting on the cyber challenge, and maintaining clear channels with global government bodies, helps inform and shape legislation.



Enhance capabilities

Our community is a trusted forum to share insights and learn from one another. Formal activities—like exercises and workshops—and informal relationship-building cultivate this trust.

THANK YOU!



Faye Francy
Executive Director



20 F Street Northwest
Suite 700
Washington, DC 20001
703-861-5417
fayefrancy@automotiveisac.com



<http://www.automotiveisac.com>